

Java Sea 1942

ABDA Joint Naval Command

Sea	Calm
Visibility	Fair (30,000 yards max)
Daylight	Yes (for 60 game turns)



Rear Admiral Karel Doorman (RNN)

De Ruyter^{CL}, *Java*^{CL}, *Kortenaer*^{DD}, *Witte De With*^{DD}

Captain Oliver Gordon (RN) : *HMS Exeter*^{CA}, *HMAS Perth*^{CL}, *Electra*^{DD},
Encounter^{DD}, *Jupiter*^{DD}

Captain A H Rooks(USN) : *USS Houston*^{CA}, *John D Edwards*^{DD}, *Alden*^{DD}, *Paul Jones*^{DD}, *John D Ford*^{DD}

It is February 27th 1942. You are the senior allied naval officer in command of this multi-national force, that is the only thing which stands between the Japanese invasion force and the island of Java, the administrative, industrial and vital working centre for the 3,000 mile long chain of islands that is the Dutch East Indies. You are flying your flag in *DeRuyter* and have already been at sea for 37 hours in search of the invasion force and were about to head back to your home port of Surabaya when a reconaissance plane reported sighting the Japanese troop ship convoy 80 miles to the north. You turned your ships around and are now heading at full speed in the direction of the reported sighting. The time is 1520 and the day is warm and humid with a haze low down on the sea.

There are no common signalling procedures in place, you speak no English and have therefore to pass your orders to the English speaking captains by means of a bi-lingual liason officer on board *Exeter*. To reflect this difficulty in communication any orders to captains Oliver Gordon, A.H.Rooks and Waller (of the *Exeter*, *Houston* and *Perth* respectively) must be written down on paper the game turn before they are to be carried out. Also should *Exeter* be disabled or suffer a bridge hit, this delay will extend to 2 game turns. In addition *Kortanaer* has boiler problems and can only make

Java Sea 1942

25 knots and Houston's rear turret is out of action due to bomb damage sustained a few days earlier.

Java Sea 1942

Imperial Japanese Navy

Sea **Calm**
Visibility **Fair** (30,000 yards max)
Daylight **Yes** (for 60 game turns)

With the opening of 1942 the unstoppable Japanese war machine is gathering pace. On 15th February 85,000 British and Australian troops surrendered at Singapore, and the rest of the Malaysian peninsula followed quickly. Bali surrendered on the 18th, Timor a few days later. Next in line is the island of Java with its rich oil reserves. A two pronged attack is planned with landings at Kragan in the North East and in the west at Bantam Bay, Merak and Eretenwetan near the capital Batavia.



Rear Admiral Shoji Nishimura

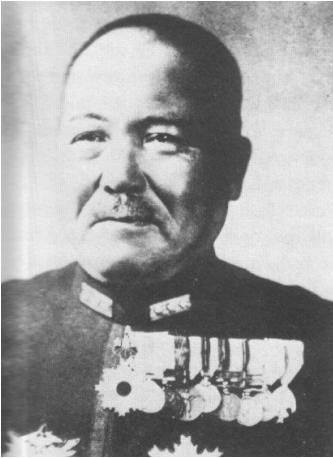
First Escort Force - *Naka*^{CL}, *Asagumo*^{DD}, *Minegumo*^{DD}, *Yudachi*^{DD}, *Harusame*^{DD},
Murasame^{DD}, *Samidare*^{DD}



Rear Admiral Raizo Tanaka

Second Escort Force - *Jintsu*^{CL}, *Yukikaze*^{DD}, *Tokitsukaze*^{DD}, *Amatsukaze*^{DD},
Hatsukaze^{DD}

Java Sea 1942



Rear Admiral Takagi

Support Group - *Nachi*^{CA}, *Haguro*^{CA}, *Kawakaze*^{DD}, *Yamakaze*^{DD}, *Sazanami*^{DD}, *Ushio*^{DD}

You are in command of the the Eastern attack group comprising 41 transports escorted by the first and second escort forces and your heavy cruiser support group. The relative positions of your forces are shown in the diagram below, with the first escort force about 13,000 yards to the west, the second 13,000 yards to the south east. Your spotter planes have been tracking a squadron of allied cruisers which seem intent on intercepting the convoy, so you have ordered the transports to reverse course and retire to the north while you prepare to meet the threat. The time is 1520 and the day is warm and humid with a haze low down on the sea. The enemy cruisers are 30km to the south of your position.

